



**India Meteorological Department
(Ministry of Earth Sciences)**

BULLETIN NO. : 14 (BOB/07/2022)

TIME OF ISSUE: 1400 HOURS IST

DATED: 21.08.2022

FROM: INDIA METEOROLOGICAL DEPARTMENT (FAX NO. 24643965/24699216/24623220)

TO: CONTROL ROOM, NDM, MINISTRY OF HOME AFFAIRS (FAX.NO. 23093750)

CONTROL ROOM NDMA (FAX.NO. 26701729)

CABINET SECRETARIAT (FAX.NO.23012284, 23018638)

PS TO HON'BLE MINISTER FOR S & T AND EARTH SCIENCES (FAX NO.23316745)

SECRETARY, MOES (FAX NO. 24629777)

H.Q. (INTEGRATED DEFENCE STAFF AND CDS) (FAX NO. 23005137/23005147)

DIRECTOR GENERAL, DOORDARSHAN (23385843)

DIRECTOR GENERAL, AIR (23421105, 23421219)

PIB MOES (FAX NO. 23389042)

UNI (FAX NO. 23355841)

D.G. NATIONAL DISASTER RESPONSE FORCE (NDRF) (FAX NO. 26105912, 2436 3260)

DIRECTOR, PUNCTUALITY, INDIAN RAILWAYS (FAX NO. 23388503)

CHIEF SECRETARY, CHATTISGARH (FAX NO. 771-2221206)

CHIEF SECRETARY, GOVT. OF MADHYA PRADESH (FAX NO. 755-2441076)

CHIEF SECRETARY, GOVT. OF MAHARASHTRA (FAX NO. 022- 22028594)

CHIEF SECRETARY, GOVT. OF UTTAR PRADESH (FAX NO. 522- 2239283)

CHIEF SECRETARY, GOVT. OF RAJASTHAN (FAX NO. 0141-2227114)

CHIEF SECRETARY, GOVT. OF GUJARAT (FAX NO. 079-23250305)

Sub: Depression over Northeast Madhya Pradesh

The Depression over Northwest Chhattisgarh and adjoining Northeast Madhya Pradesh moved west-northwestwards during past 06 hours with a speed of 18 kmph and lay centered at 1130 hrs IST of today, the 21st August, 2022 over Northeast Madhya Pradesh near latitude 24.0°N and longitude 81.2°E, about 60 km north-northeast of Umaria (Madhya Pradesh), 70 km south-southeast of Satna (Madhya Pradesh) and 170 km east of Damoh (Madhya Pradesh).

It would continue to move west-northwestwards across north Madhya Pradesh and weaken into a Well Marked Low Pressure Area during next 24 hours.

Forecast track and intensity are given in the following table:

Date/Time(IST)	Position (Lat. °N/ long. °E)	Maximum sustained surface wind speed (Kmph)	Category of cyclonic disturbance
21.08.22/1130	24.0/81.2	40-50 gusting to 60	Depression
21.08.22/1730	24.2/80.4	35-45 gusting to 55	Depression
21.08.22/2330	24.4/79.5	30-40 gusting to 50	Depression
22.08.22/0530	24.6/78.6	25-35 gusting to 45	Well Marked Low

Warnings:

Rainfall:

21st August: Rainfall at most places with heavy to extremely heavy falls at isolated places is very likely over West Madhya Pradesh. Rainfall at most places with heavy to very heavy rainfall at isolated places is very likely over East Rajasthan and East Madhya Pradesh. Heavy rainfall at isolated places is very likely over southeast & southwest Uttar Pradesh, Vidarbha and Chhattisgarh.

22nd August: Rainfall at most places with heavy to extremely heavy rainfall at isolated places is very likely over west Madhya Pradesh and East Rajasthan; heavy to very heavy rainfall at isolated places is very likely over Madhya Maharashtra and heavy rainfall at isolated places is very likely over West Rajasthan and North Gujarat region.

23rd August: Rainfall at most places with heavy to very heavy rainfall at isolated places is likely over south Rajasthan & adjoining North Gujarat and heavy rainfall at isolated places is likely over Madhya Maharashtra.

24th August: Rainfall at most places with heavy rainfall at isolated places is likely over Southwest Rajasthan.

Wind:

- **Squally wind speed reaching 30-40 gusting to 50 kmph** is likely over Northwest Chhattisgarh and adjoining areas of East Madhya Pradesh during next 12 hours and **strong winds speed reaching 25-35 kmph gusting to 45 kmph** is likely to prevail over North Madhya Pradesh and adjoining south Uttar Pradesh during next 24 hours.

Damage expected over north Chattisgarh and North & Central Madhya Pradesh:

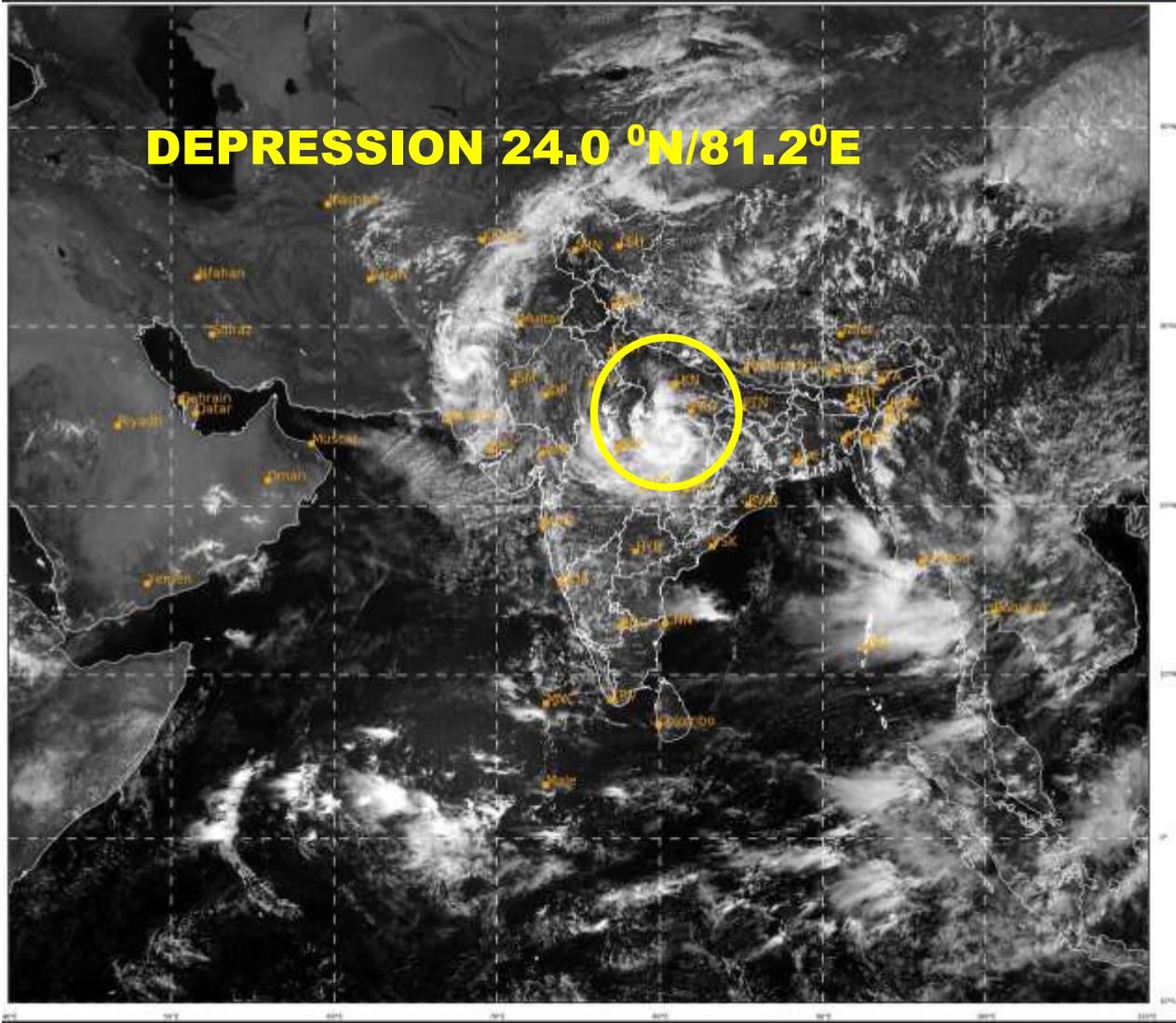
- Damage to loose/unsecured structures. Some breaches in Kutcha road & embankments due to flooding.
- Damage to small trees like Banana, Papaya etc. Damage to standing crops and horticulture.
- Localized Flooding of roads, water logging in low lying areas and closure of underpasses.
- Reduction in visibility due to heavy rainfall.
- Disruption of traffic in major cities due to water logging in roads.
- Localized Landslide/Mudslides.
- It may lead to riverine flooding in some river catchments (for riverine flooding please visit Web page of CWC)

Next Bulletin will be issued at 2030 hours IST of today, the 21st August, 2022.

(Ananda Kumar Das)
Scientist E, Cyclone Warning Division, New Delhi

Copy to: ACWC Mumbai/ ACWC Kolkata/ ACWC Chennai/ CWC Bhubaneswar/CWCVisakhapatnam/ / MO Port Blair/MC Raipur/MC Bhopal/MC Hyderabad/RMC Nagpur/

LEGEND: Heavy Rainfall: 64.5 to 115.5mm, **Very Heavy Rainfall:** 115.6 to 204.4mm **Extremely Heavy Rainfall:** more than 204.5 mm, **Most Places:** more than 76% of total stations, **Many Places:** 50% to 75% of total stations, **Isolated Places:** Less than 25% of total stations





OBSERVED AND FORECAST TRACK ALONGWITH CONE OF UNCERTAINTY OF DEPRESSION OVER NORTHEAST MADHYA PRADESH BASED ON 0600 UTC OF 21st AUGUST, 2022



DATE/TIME IN UTC

IST=UTC + 0530

L: LOW PRESSURE AREA

WML: WELL MARKED LOW PRESSURE AREA

D: DEPRESSION (17-27 KT)

DD: DEEP DEPRESSION (28-33 KT)

CS: CYCLONIC STORM (34-47 KT)

SCS: SEVERE CYCLONIC STORM (48-63KT)

VSCS: VERY SEVERE CYCLONIC STORM (64-89 KT)

ESCS: EXTREMELY SEVERE CYCLONIC STORM (90-119 KT)

SuCS: SUPER CYCLONIC STORM (\geq 120 KT)



LESS THAN 34 KT



34-47 KT



\geq 48 KT



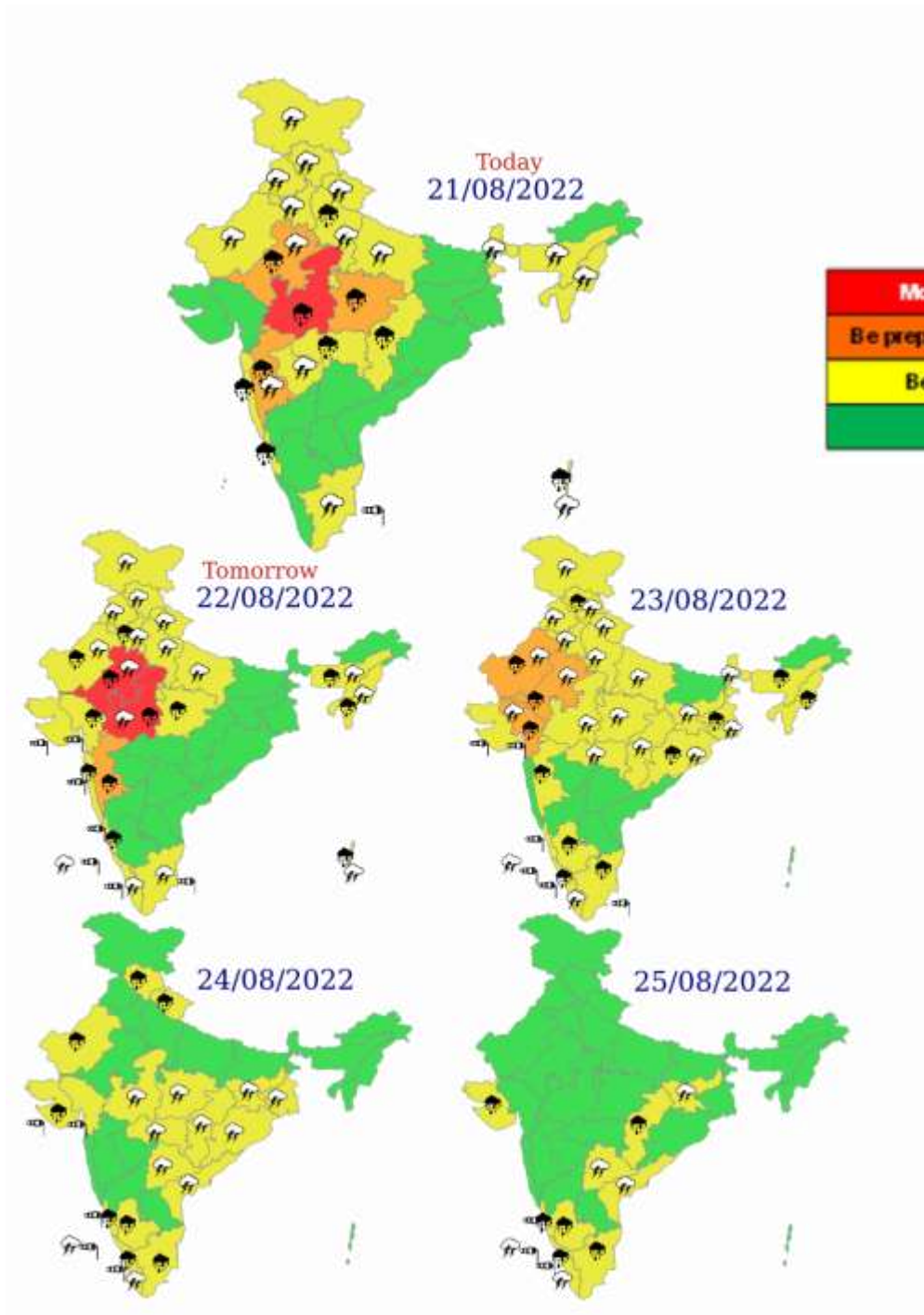
OBSERVED TRACK



FORECAST TRACK



CONE OF UNCERTAINTY



Most Vigil (Take Action)
Be prepared/updated (Keep Vigil)
Be aware (Be updated)
No Warning

 Heavy Rain


 Heavy Snow

 Thunderstorm

 Dust Storm


 Strong Winds

 Visibility


 Cyclone

 Squall/ Hail

 Frost

 Cold Wave

 Heat Wave

 Sea State

Fishermen warning graphics

Day 1: 21.08.2022/11:30 AM to 22.08.2022/05:30 AM



Day 2: 22.08.2022/05:30 AM to 23.08.2022/05:30 AM



Day 3: 23.08.2022/05:30 AM to 24.08.2022/05:30 AM



Day 4: 24.08.2022/05:30 AM to 25.08.2022/05:30 AM



Day 5: 25.08.2022/05:30 AM to 26.08.2022/05:30 AM

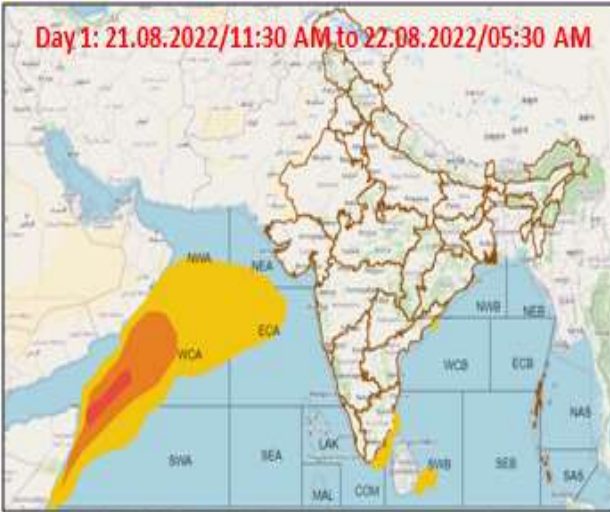


Squally WX with wind speed 40-45 gusting to 55 kmph

Squally wind speed 45-55 kmph gusting to 65 kmph

Probability of exceedance of maximum sustained winds ≥ 45 kmph

Day 1: 21.08.2022/11:30 AM to 22.08.2022/05:30 AM



Day 2: 22.08.2022/05:30 AM to 23.08.2022/05:30 AM



Day 3: 23.08.2022/05:30 AM to 24.08.2022/05:30 AM


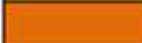



Day 4: 24.08.2022/05:30 AM to 25.08.2022/05:30 AM



Day 5: 25.08.2022/05:30 AM to 26.08.2022/05:30 AM



	Probability of exceedance
	Low (1-33%)
	Moderate (34-67%)
	High (68-100%)